



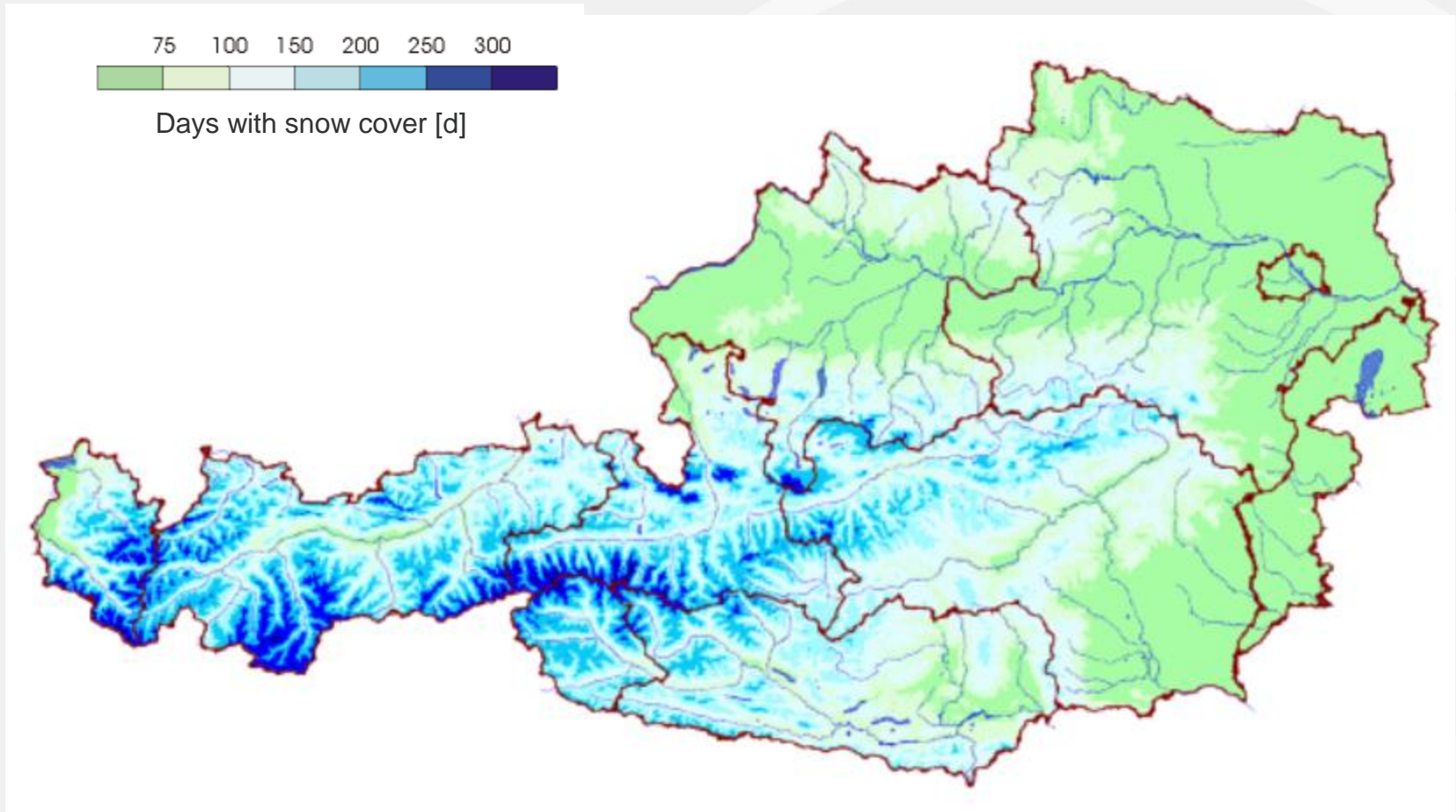
MINISTERIUM
FÜR EIN
LEBENSWERTES
ÖSTERREICH

HBLFA RAUMBERG - GUMPENSTEIN
LANDWIRTSCHAFT

A method of quantifying precipitation and evaporation in winter under climate change conditions

„Lysimeterforschung – Möglichkeiten und Grenzen“
17. Gumpensteiner Lysimetertagung 09.-10. Mai 2017
HBFLA Raumberg-Gumpenstein

Motivation



Source: Auer et al. 2001

Motivation

Snow as a factor in the water balance

Precipitation in terms of snow: ★

Depending on the region, a significant share of the total annual precipitation

Evaporation/Sublimation of snow: ∪

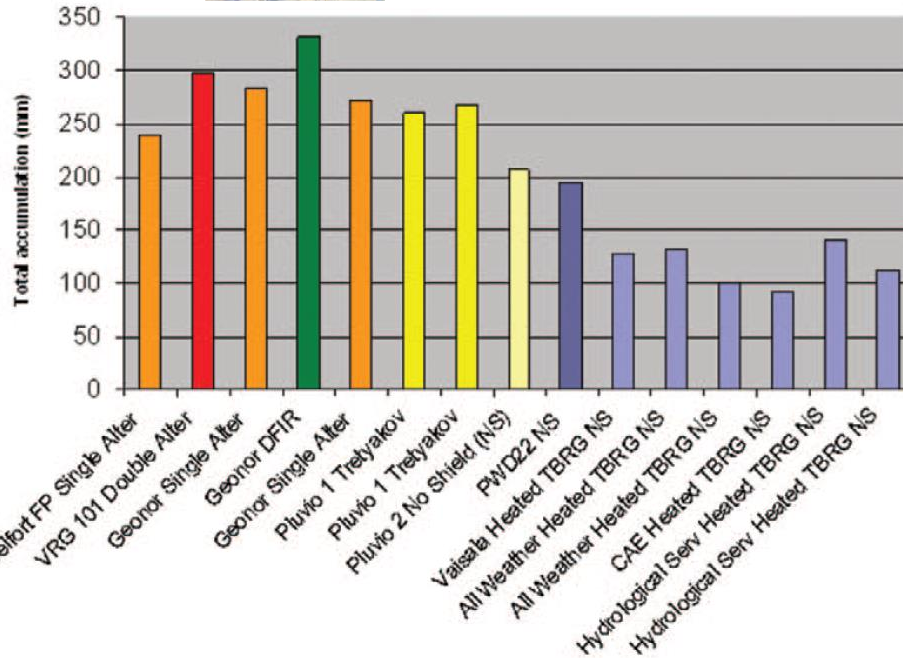
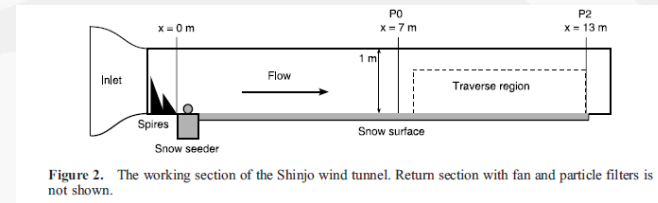
Precipitation fraction lost by evaporation and sublimation for drainage

Snow water reservoir:

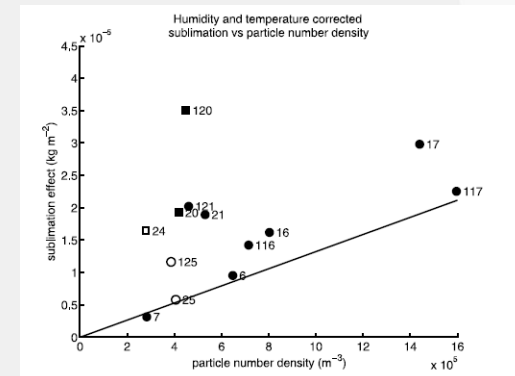
Snow is temporary storage of winter precipitation (filling ground water storage / water supply for growth period)

Motivation

How Well Are We Measuring Snow: The NOAA/FAA/NCAR Winter Precipitation Test Bed

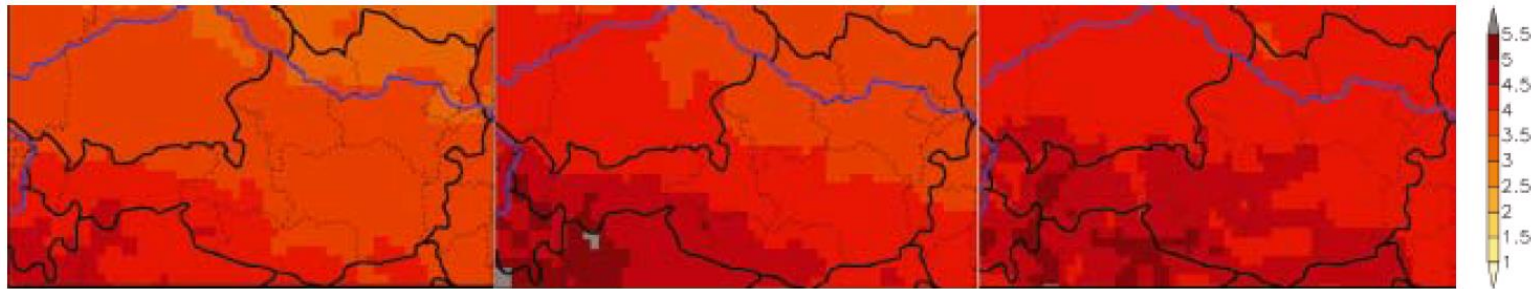


Source: Wever et al. 2009



Source: Rasmussen et al. 2012

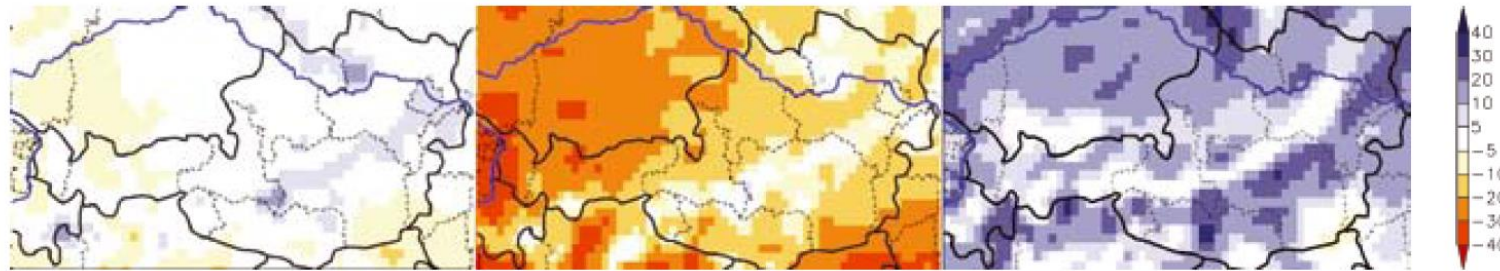
Climate change - Water balance



a) year

b) summer

c) winter



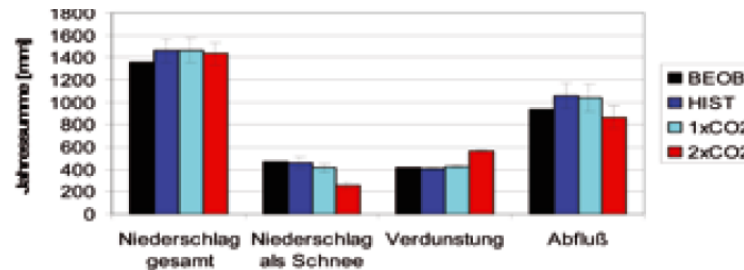
a) year

b) summer

c) winter

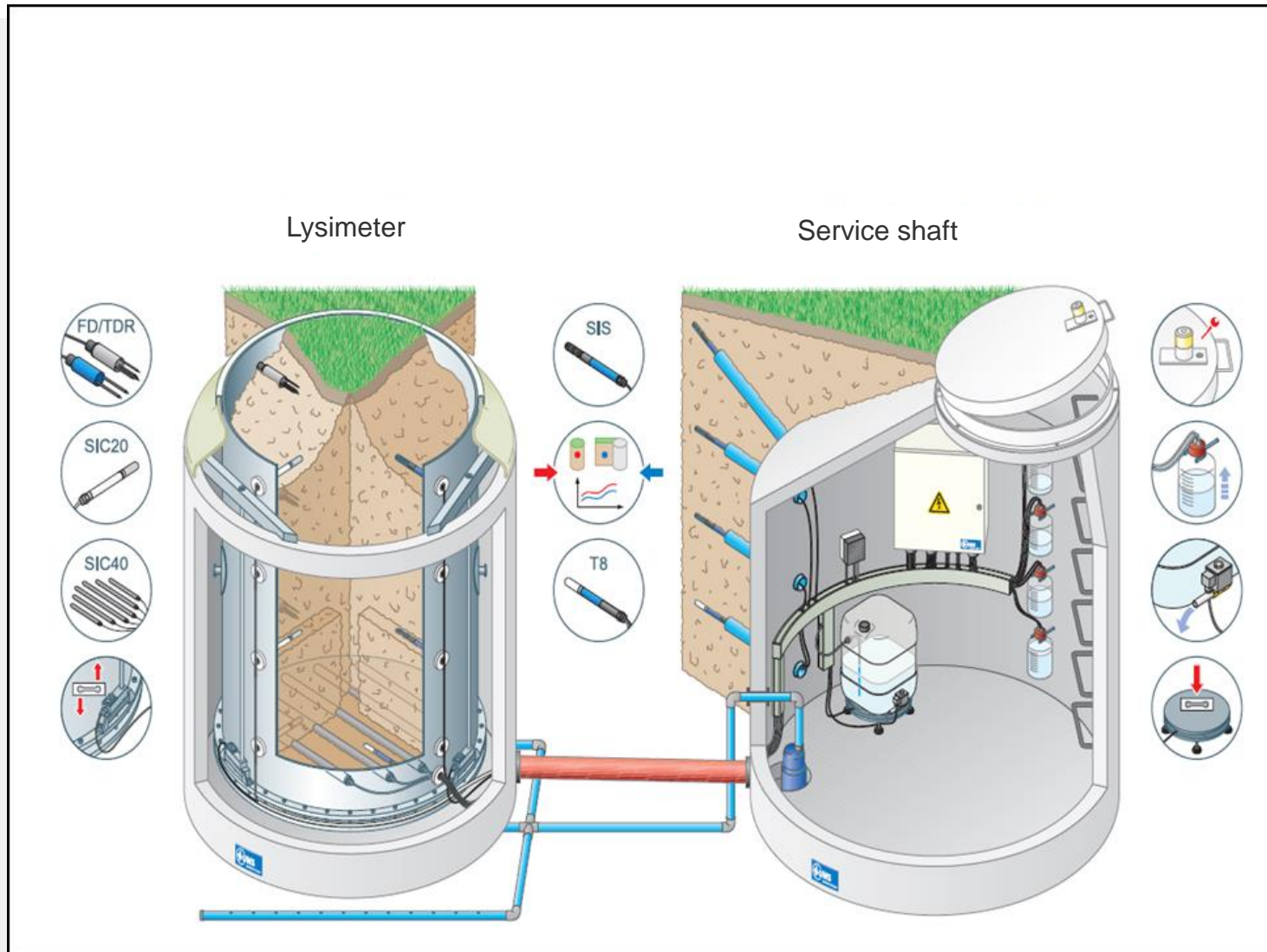
Source: UBA, 2008

Average annual values of water balance variables
Ennstal



Source: Nachtnebel und Fuchs, 2001

Lysimeter



Mechanical separation of snow load



Weightable
lysimeter vessel

Swivel

Crank drive

Fringe

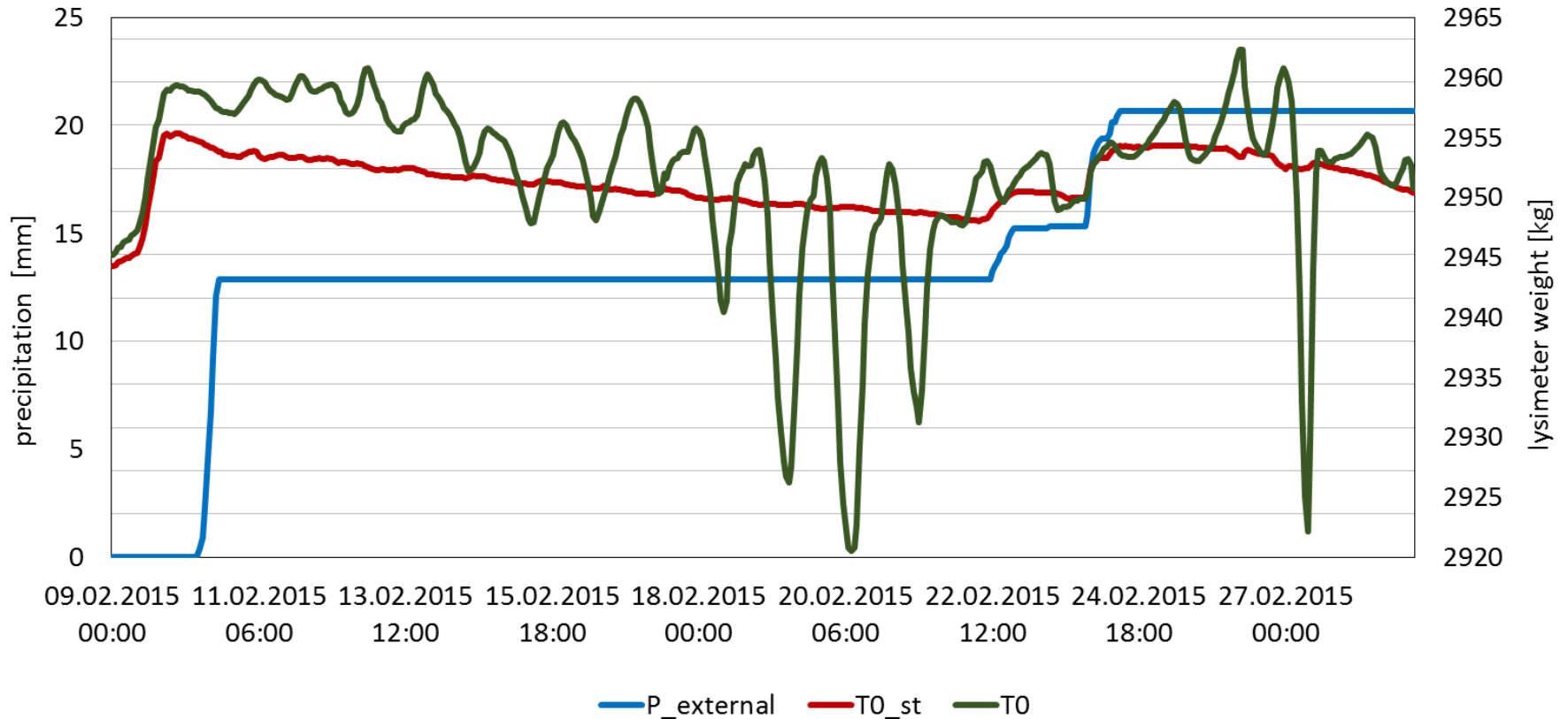
Mechanical separation of snow load



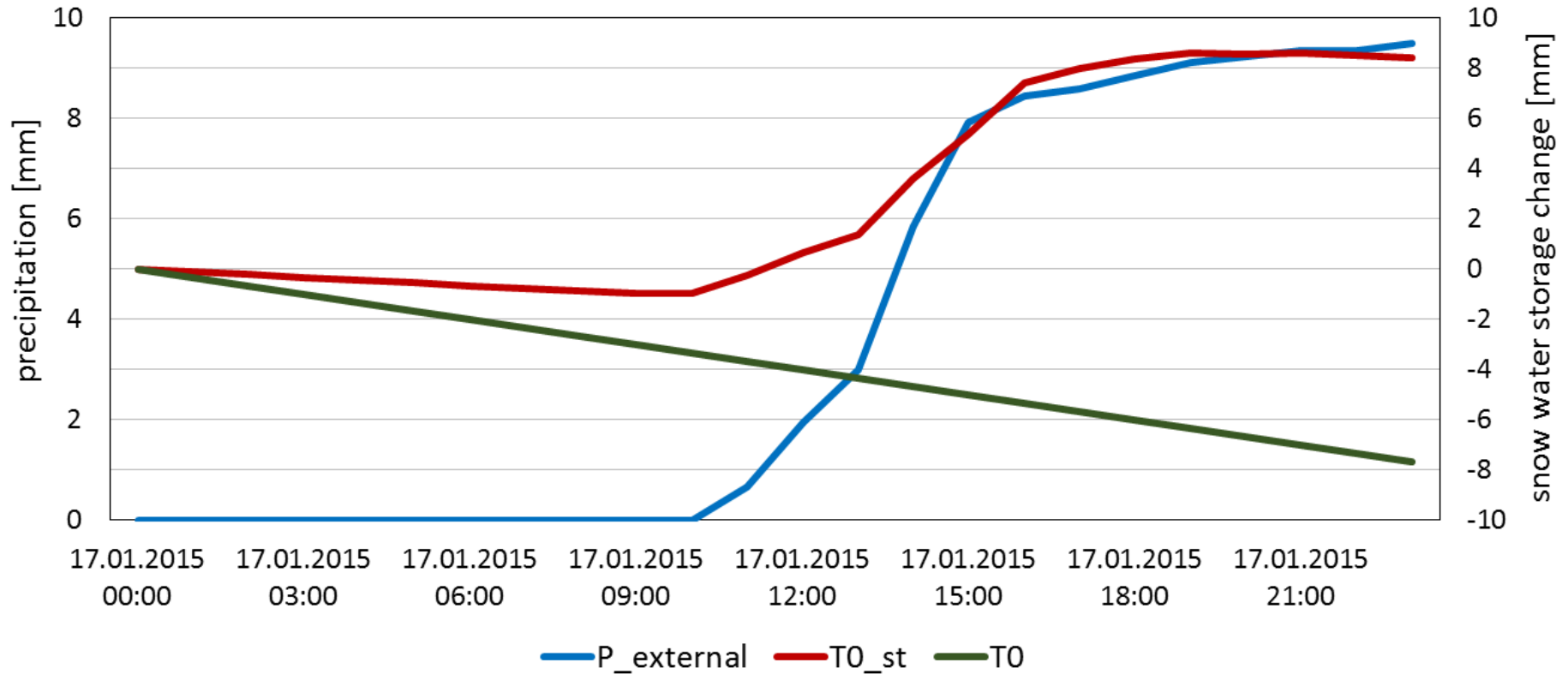
Results

Weight fluctuations *Snow water storage change*

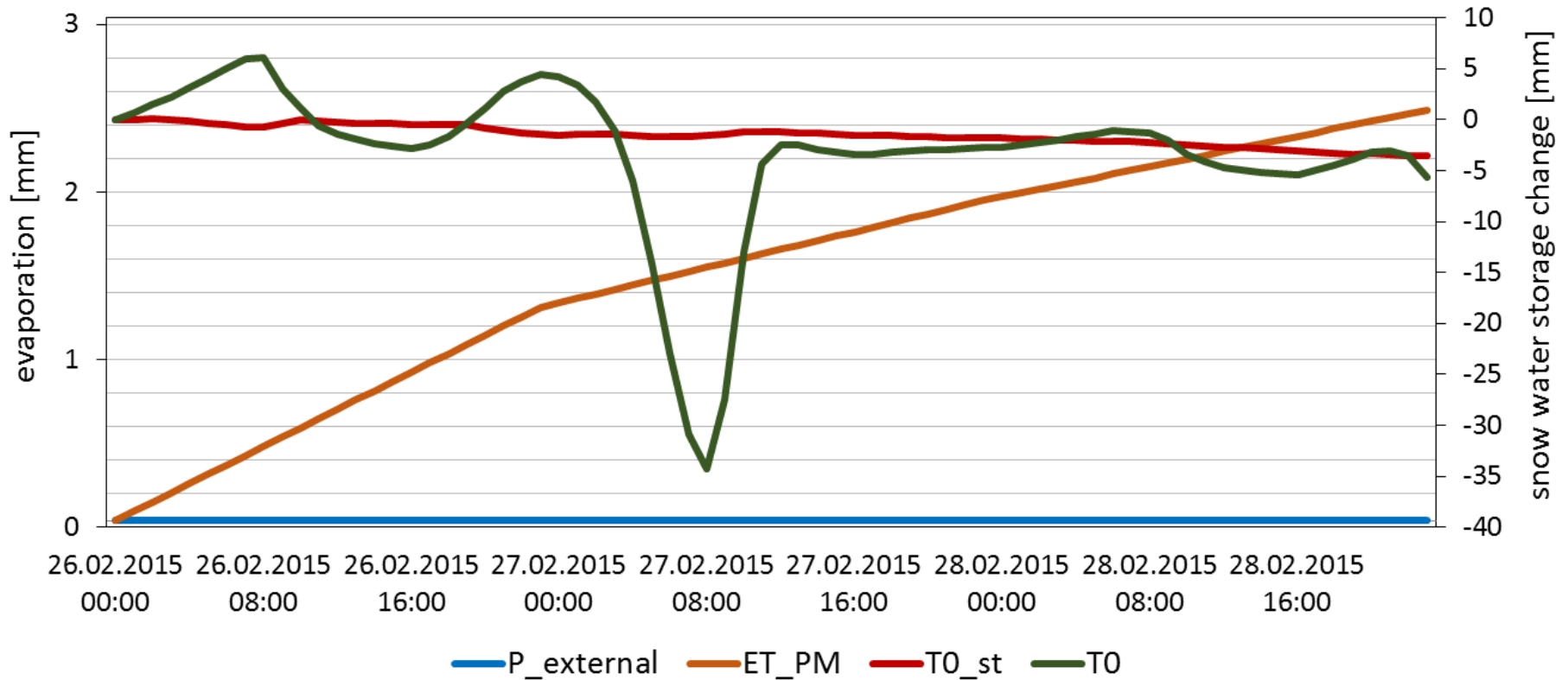
Weight fluctuations



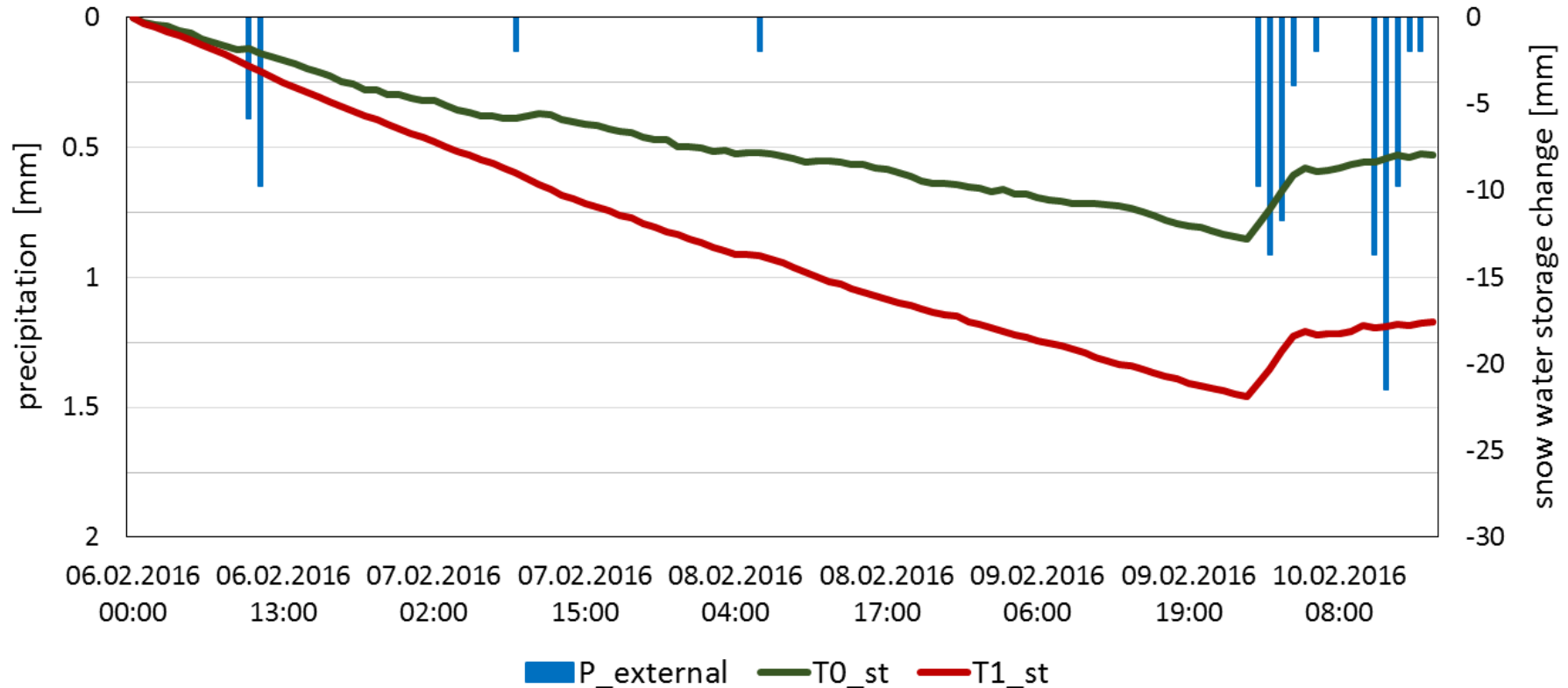
Snow accumulation



Snow evaporation



Snow accumulation/evaporation under increased temperature



Summary and conclusions

In the test period:

- the occurring weight fluctuations caused by the snow load on the lysimeter could be largely reduced
- the snow water storage changes by snow accumulation and evaporation could be obtained reproducible
- the effect of heating on evaporation could be quantified

A comprehensive assessment of

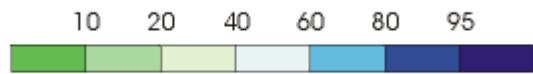
→ the effects and

→ the suitability

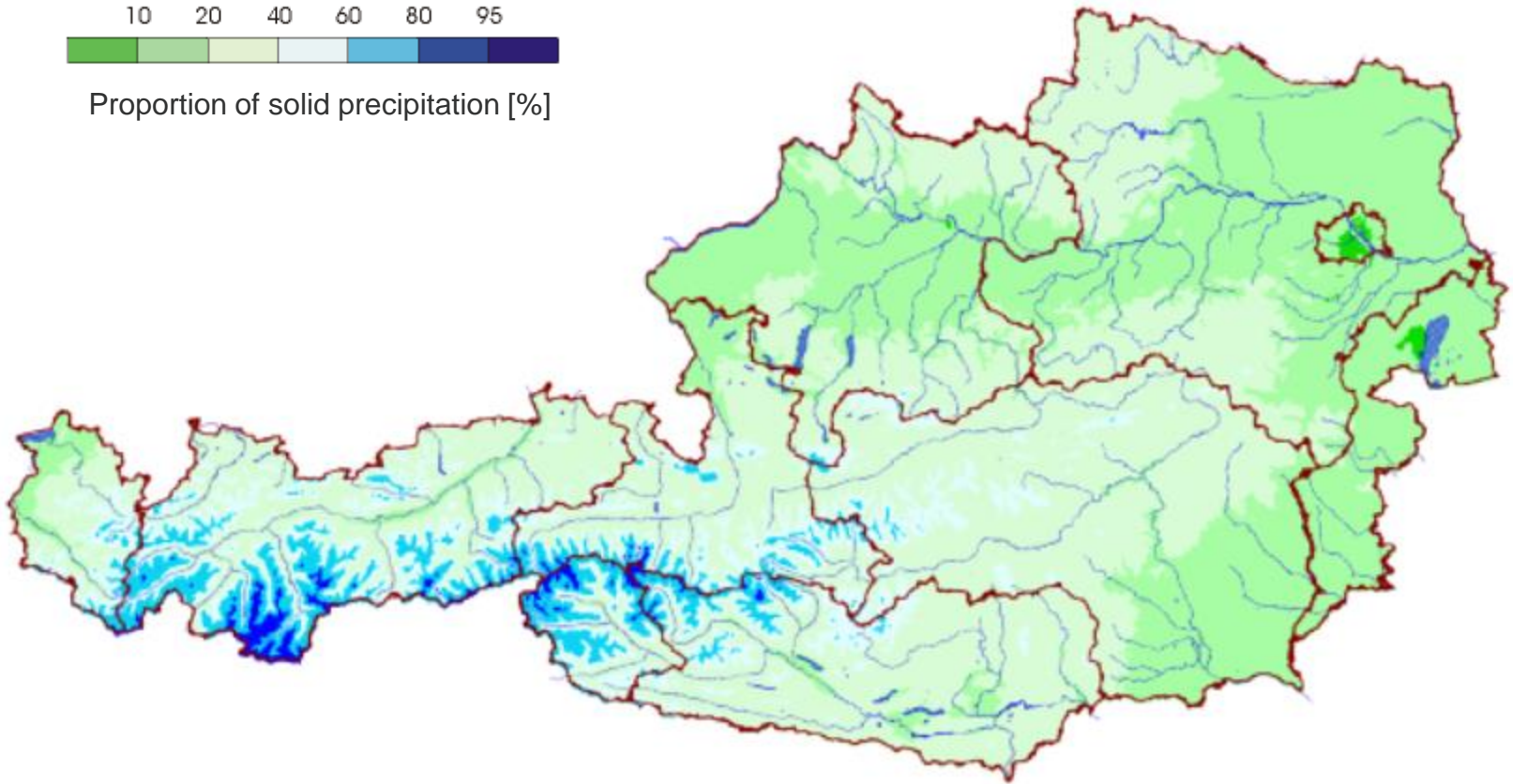
of the snow separation system under different conditions and snow levels requires a multi-year observation over all lysimeters

Thank you for your attention!

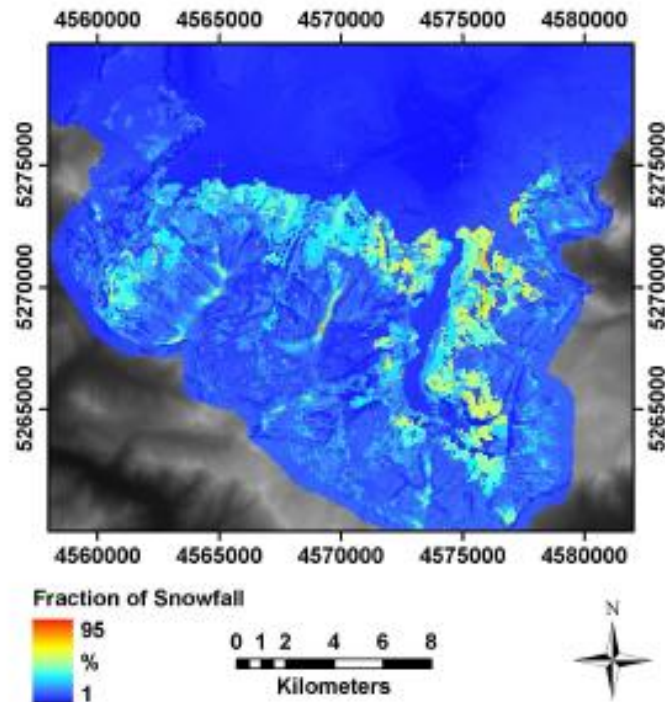




Proportion of solid precipitation [%]



Source: Auer et al. 2001



Source: Strasser et al. 2008

Fig. 15. Fraction of modelled total wintery snow sublimation losses of total wintery snowfall precipitation in the National Park area (2003/2004).

Table 2. Contributions relative to total snowfall and scale-dependent significance of the winter water balance components as modelled with AMUNDSEN for the Berchtesgaden National Park domain for 2003/2004. The additional amount of snowmelt is caused by rain-on-snow.

Water balance component	Seasonal amount (mm)	Relative contribution (%)	Local significance	Regional significance
Snowfall	+651.1	+100.0	high	high
Ground resublimation	+15.8	+2.4	moderate	small
Ground sublimation	-44.9	-6.9	moderate	small
Canopy sublimation	-84.9	-13.0	moderate	moderate
Sublimation from turbulent suspension	-26.5	-4.1	high	small
Snowmelt	-693.1	-106.5	high	high