

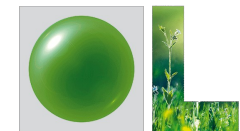
ERFP TF In Situ, Belgrade, 5th May 2017

## In Situ Conservation

# Sanitary and Veterinary Issues National Emergency Plans



Beate Berger



MINISTERIUM  
FÜR EIN  
LEBENSWEERTES  
ÖSTERREICH

HBLFA RAUMBERG - GUMPENSTEIN  
LANDWIRTSCHAFT

# Content

- Sanitary & Veterinary
- Possibilities
- OIE
- Regional transboundary breeds
- National Emergency Plans (NEP)
- Conclusions and questions

# Sanitary & Veterinary

- Sanitary conditions in a country
- Sanitary requests to be met by the single animal
- Veterinary issues in general – health of the animal(s), herds, ..
- Special Veterinary issues according to current international and/or national regulations and laws
- Genetic hygiene – hereditary defects, ...

# Possibilities of S & V

- Enable safe national and international exchange and use of animals
- Ensure harmonized practices in sampling and testing
- Protect against the spread of infective diseases, zoonoses and hereditary defects

# Sanitary & veterinary regulations

- Regulations EU – 3rd countries - international
- Problem (regional) transboundary breeds
- Problems local
- Can National regulations provide solution?

# OIE

## World Organisation for Animal Health

- Aims (selection)
  - Safeguard world trade by publishing health standards for international trade in animals and animal products
  - Improve the legal framework and resources of national Veterinary Services
- 116 diseases listed for 2017
- 23 multi-species diseases

# OIE recommendations

- Base of legislation (national and international)
  - EU legislation sometimes exceeds OIE recommendations
- Consider commensurability  
but
- *do not mention conservation of genetic resources!*

# Example MAEDI/VISNA

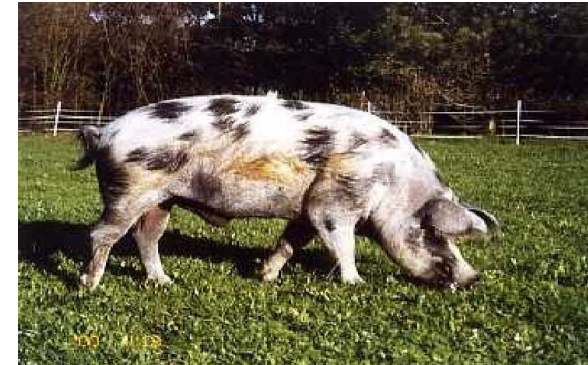
- OIE listed disease
- Slow virus infection
- Lab diagnosis only effective in older animals (> 1 year)
- Usually exchange of young animals
- What if animal is carrier?





# Example Turopolje Pig

- Regional transboundary breed
- Croatia, Austria, Germany
  - critically endangered in each country
- Austrian project in 2015
  - Determine suitable candidates for broadening of genetic base of Austrian Population
  - Best material in Croatia
  - *No way of getting animals and/or semen!*



# Problems & Questions

- Regulations tailored to mainstream breeds with well established trade and biotechnical structures
  - May cause major obstacles for conservation of (regional) transboundary breeds
- How to help endangered regional transboundary breeds?
- How many breeds are concerned? Where?

# Concerning in situ

- EU legislative allows exceptions within limits
  - Privileged premises – zoos even special treatment in case of FMD!
  - But animals must not get into the food chain
  - Rescue centres could be a solution
  - But very difficult to comply with regulations and expensive
- National emergency plans (NEP)
  - Exist for special diseases (FMD, African Swine Fever...)
  - How to integrate in situ issues into NEP?
  - Careful reckoning of pros and cons



Thank you for  
questions,  
comments,  
discussion